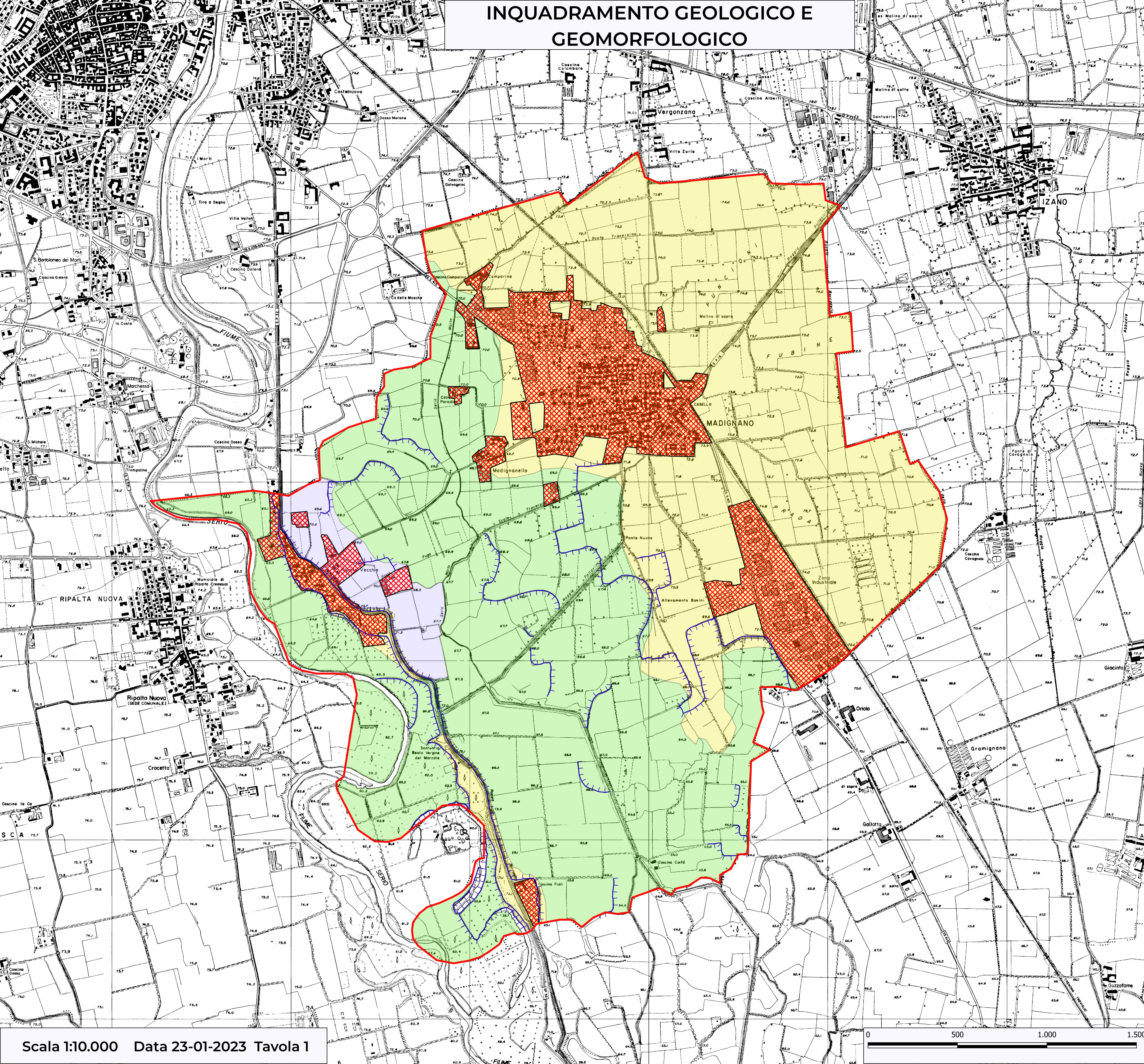


# INQUADRAMENTO GEOLOGICO E GEOMORFOLOGICO









"LA BOSCARINA"  
Geologia Applicata & Mining Consulting  
Via P. Donati 48 26013 CREMA (CR)  
Tel. 0373-80351 info@laboscarina.com

Committente: COMUNE DI MADIGNANO  
NUOVO P.G.T. COMUNALE

## LEGENDA



-  Limite comunale
-  Terrazzi morfologici
-  Aree urbanizzate
-  Livello fondamentale della pianura
-  Piane alluvionali attive (Alluvioni recenti-attuali)
-  Valli alluvionali terrazzate (Alluvioni medio-antiche)

